

QUALITY MADE IN GERMANY.

Quality assurance through in-house design, manufacturing, assembly, commissioning, qualification and validation

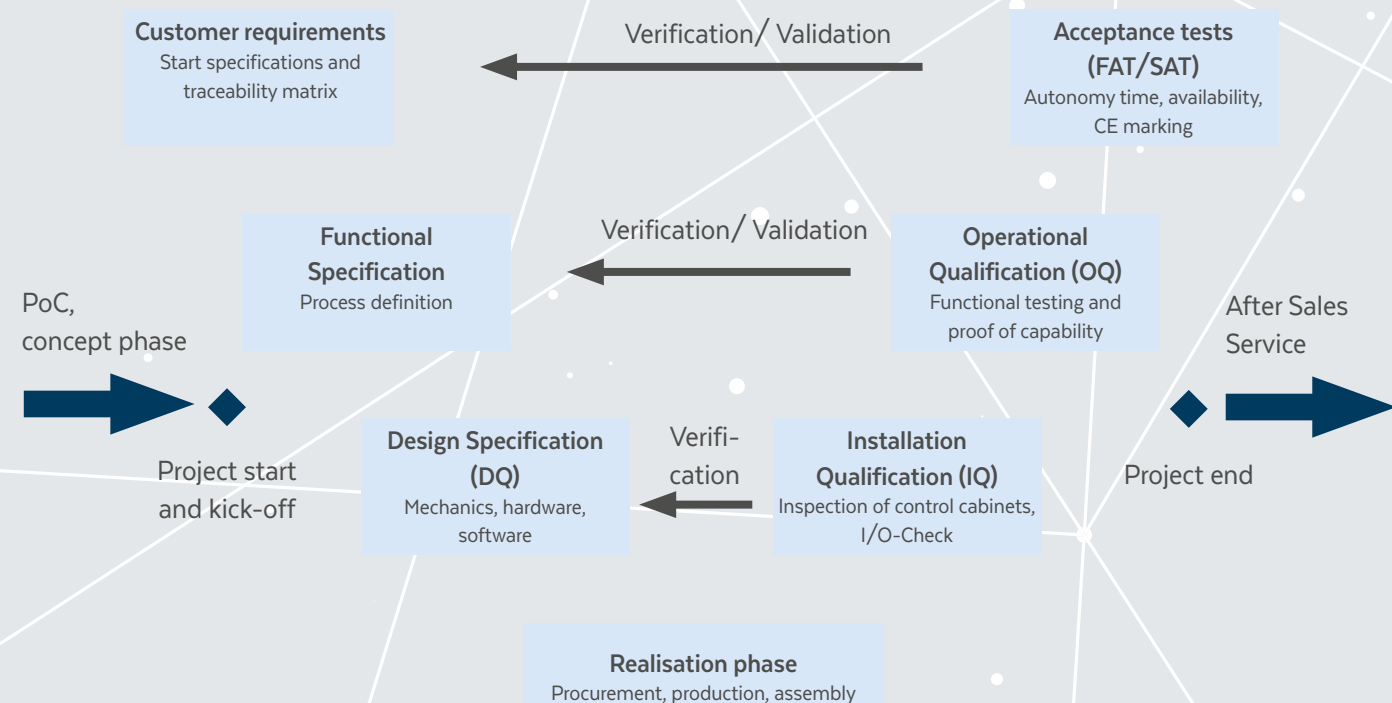
Our standards:

- Quality management according to DIN EN ISO 9001:2015
- Environmental management according to DIN EN ISO 14001:2015
- Machinery Directive 2006/42/EC
- Implementation of the valid medical technology standards (EU GMP, ICH Q10 and FDA)

Your benefits:

- Consistent Good Engineering Practice
- GMP-compliant design
- Qualification support during the entire project
- Qualification packages tailored to individual customer requirements

PROJECT PROCESS AND QUALIFICATION AT STRAMA-MPS

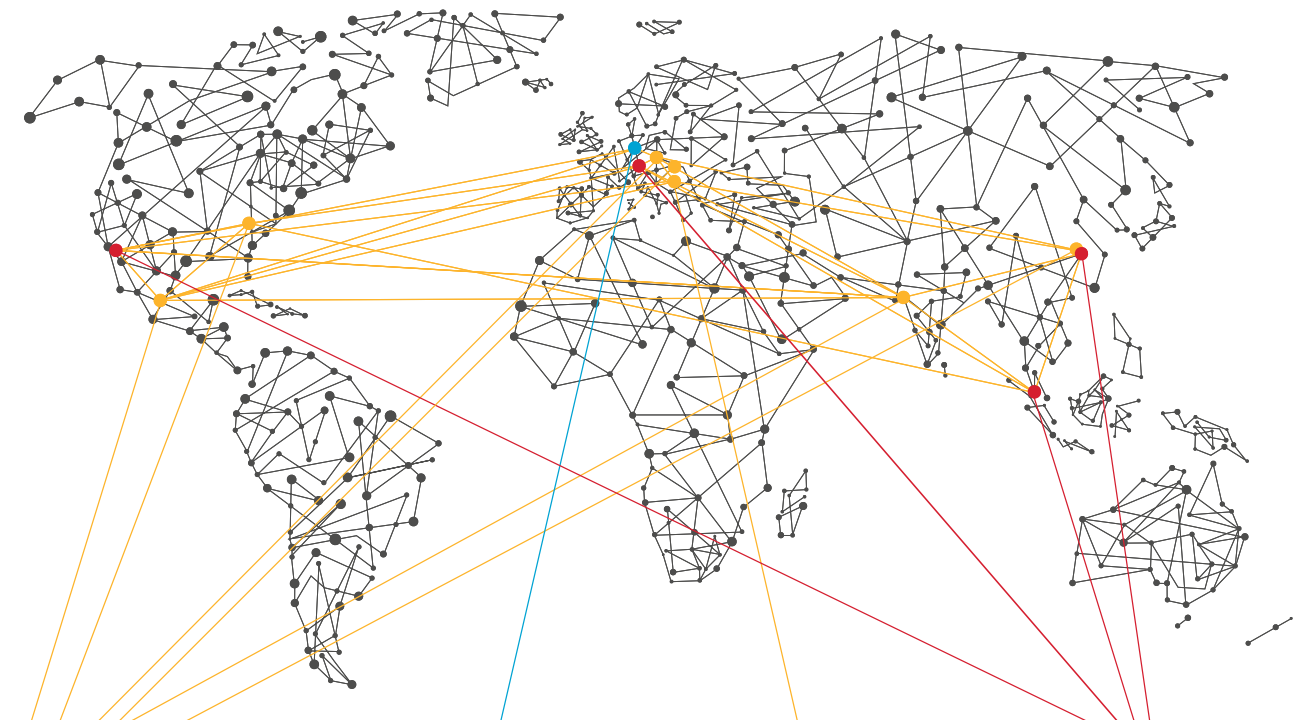


POWERFUL SYNERGIES: “MEMBER OF STRAMA GROUP”

Strama-MPS develops special-purpose machinery, equipment and complete solutions for the production, assembly and testing of complex technical components and products. International technology groups appreciate our engineering expertise, the experience and the certainty: We lead your project to success.

AuE Kassel has acquired in recent years an excellent reputation with assembly lines for axles and chassis components in the passenger car and commercial vehicle sector. With its axle alignment systems, AuE has long been the world market leader.

For more than 40 years, **F & K DELVOTEC** is the worldwide innovation leader for wire and laser bonders. Technology and quality convince our customers from the industry and the research institutes.



STRAMAMPS

GERMANY, Straubing
HUNGARY, Budapest
CHINA, Taicang
USA, Duncan
MEXICO, Puebla
INDIA, Nashik

STRAMASUMMIT

AuE

GERMANY, Kassel

ULTINORM

CROATIA, Cerna
Gradište
GERMANY, Osterhofen

F&K DELVOTEC

GERMANY, Ottobrunn
USA, Foothill Ranch
CHINA, Taicang
SINGAPORE

Strama-MPS Maschinenbau GmbH & Co. KG
Ittlinger Straße 195
94315 Straubing / Germany
Phone +49 9421 739-0
www.strama-mps.de

Your contact person
Andreas Höcherl
MedTech
andreas.hoecherl@strama-mps.de



More info?
SCAN ME

MOVING THE LIMITS.
TOGETHER. CONSTANTLY.

STRAMAMPS
MEMBER OF STRAMA GROUP

MEDTECH

AUTOMATION SOLUTIONS FOR MEDICAL TECHNOLOGY

FOR MAXIMUM
QUALITY AND
SAFETY

STRAMAMPS
MEMBER OF STRAMA GROUP

MEDTECH

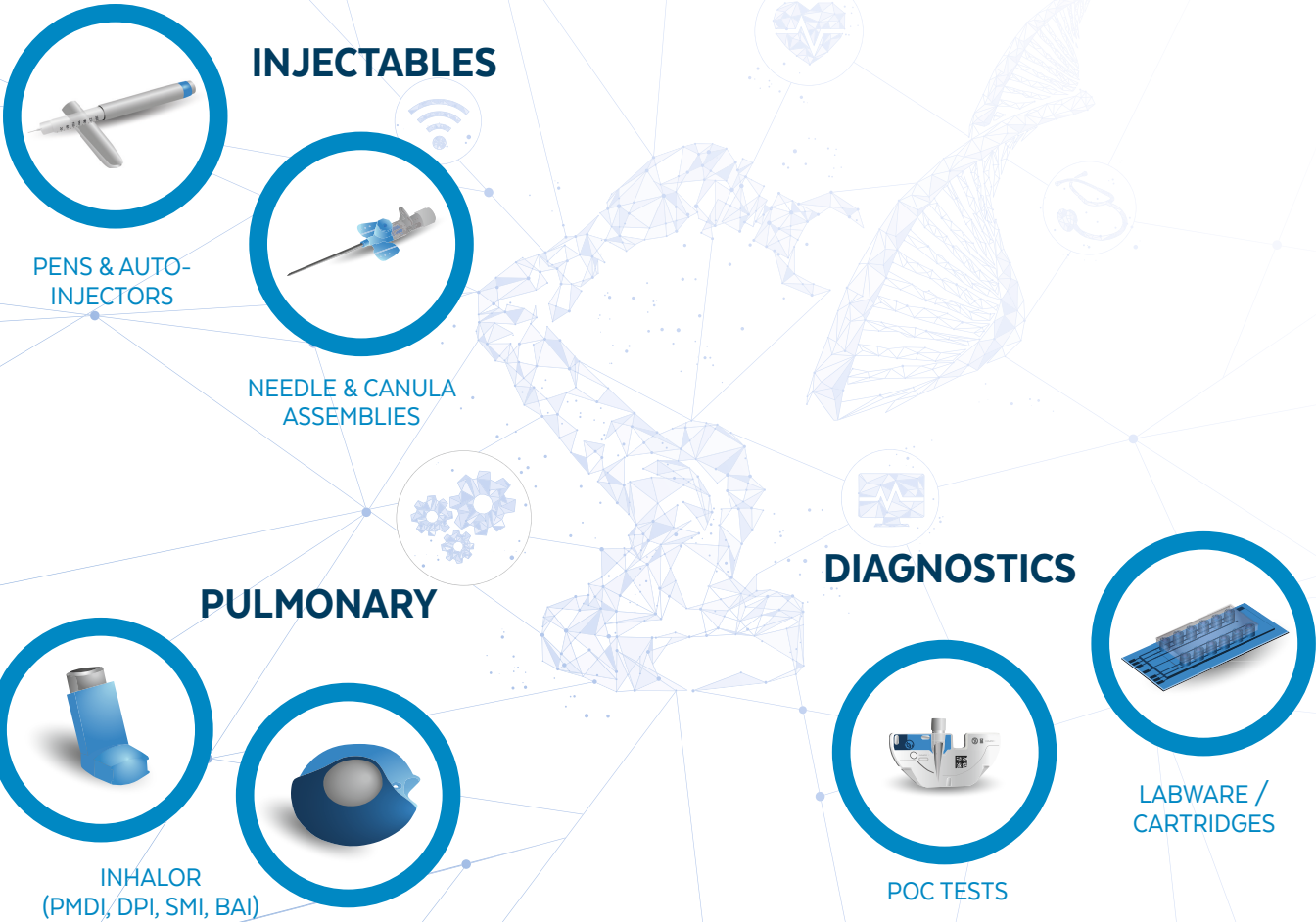
QUALITY. INNOVATION. TEAM SPIRIT.

Your partner from concept consultation to the production-ready plant

As a player between healthcare and technology, Strama-MPS offers innovative automation solutions in the field of medical technology with core competences in assembling and testing of medical devices.

Taking into account the required safety standards as well as quality and documentation requirements, we take over the machine design for the manufacturing of your products. As a result, our machines and plants achieve the highest clean room and hygiene requirements.

APPLICATION AREAS



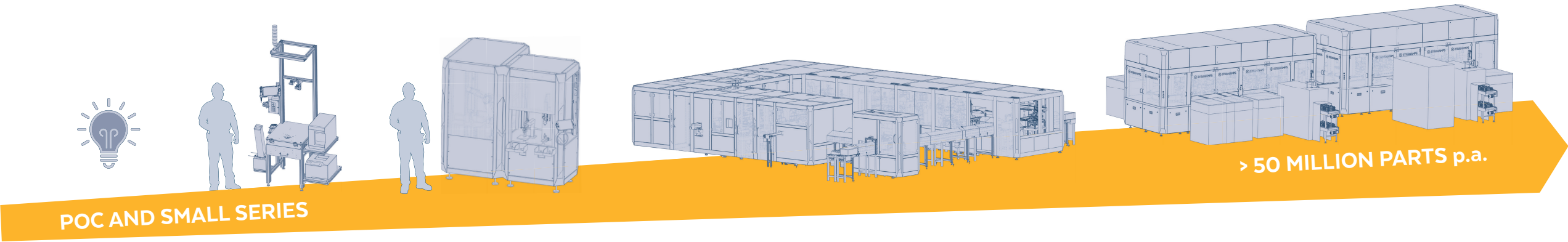
OUR SERVICES

CONSTRUCTION. MANUFACTURING. ASSEMBLY. QUALIFICATION.

From concept development and engineering to manufacturing, assembling and commissioning, we are your partner at every stage of the project. As a company in the field of special machine construction, Strama-MPS is characterized by technology, system and process-know-how. On this basis, we realize customer-specific tasks and requirements ranging from manual and semiautomated

working systems to highly automated complete solutions. As an established special machine manufacturer with a high level of vertical integration, we are ideally placed to support you in the implementation of your goals and accompany you through every phase: From the initial automation idea, through preliminary tests and pre-series setups, to full production-ready automation.

Customized machine design based on your requirements



TEST SETUP MANUAL ASSEMBLY & TESTING SEMI-AUTOMATIC ASSEMBLY & TESTING FULLY AUTOMATIC ASSEMBLY & TESTING HIGH-SPEED ASSEMBLY & TESTING

- Execution of proof of concepts (PoC)
- Analysis of the automatability of customer products (DfM/ DfA)
- Engineering and assembling of test setups
- Support of the customer during ramp-up scenarios

- servo-electric / pneumatic drives
- Implementation of machine solutions with a high number of variants
- Combination of stations with different degrees of automation
- Elaboration of machine concepts with the possibility of scaling

- Control via cam discs
- Flexible process arrangement on machine platform
- Cycle times down to one second
- High product safety due to separation of product and work area
- Optimum machine utilization through minimization of non-productive times
- Clean room requirements up to ISO Class 7

MACHINE PLATFORM PROMOCURVE

The ProMoCurve is our modular assembly platform that can be expanded almost at will. Due to the proven cam drive and the flexible transport shuttles, both a very fast and precise process flow can be realized.



View product video:



PROCESS COMPETENCES

- Component feeding
- Vibration feeder
- Linear transfer systems
- Palettizer

- Gripping and positioning
- Pressing in
- Winding
- Dosing and dispensing
- Bonding and curing
- Ultrasonic welding

- Optical inspection and measuring
- Tactile testing
- Leak test
- Force and displacement measurement
- Image processing

- Label printing
- Printing
- Labelling (Inkjet, laser, pad printing)
- DMC reading
- NOK discharge